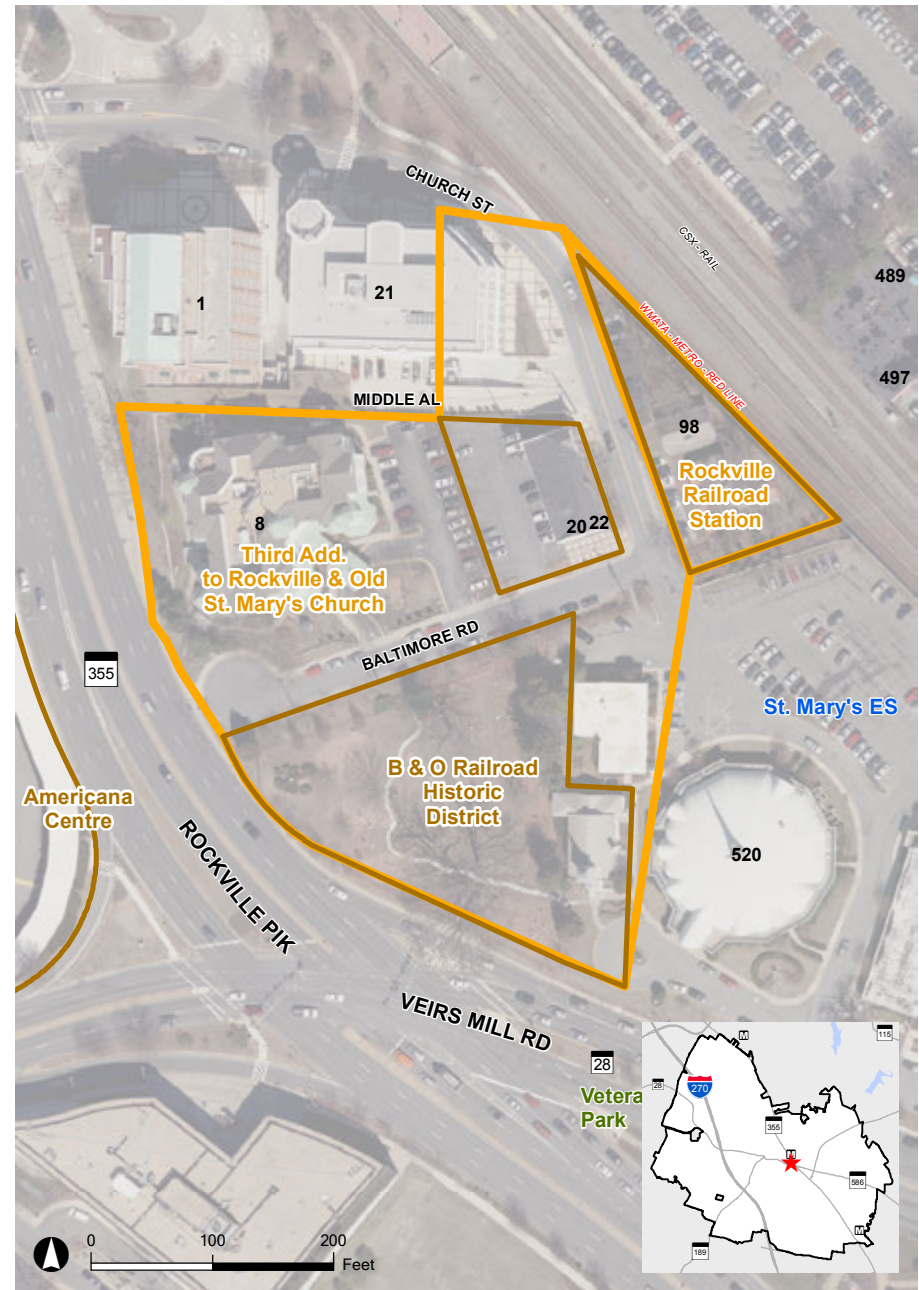


B&O Railroad Historic District

Church Street and Baltimore Road



This multi-site Historic District preserves three distinctive elements in Rockville, including private religious life (St. Mary's Church and Cemetery), the public commercial sector (Wire Hardware), and public transportation (the B&O station), which helped fuel Rockville's expansion in the late 19th century.



2014 Aerial

- Rockville Historic District
- Site Location
- National Register Site

