

Courthouse Square Historic District



Red Brick Courthouse



Grey Courthouse

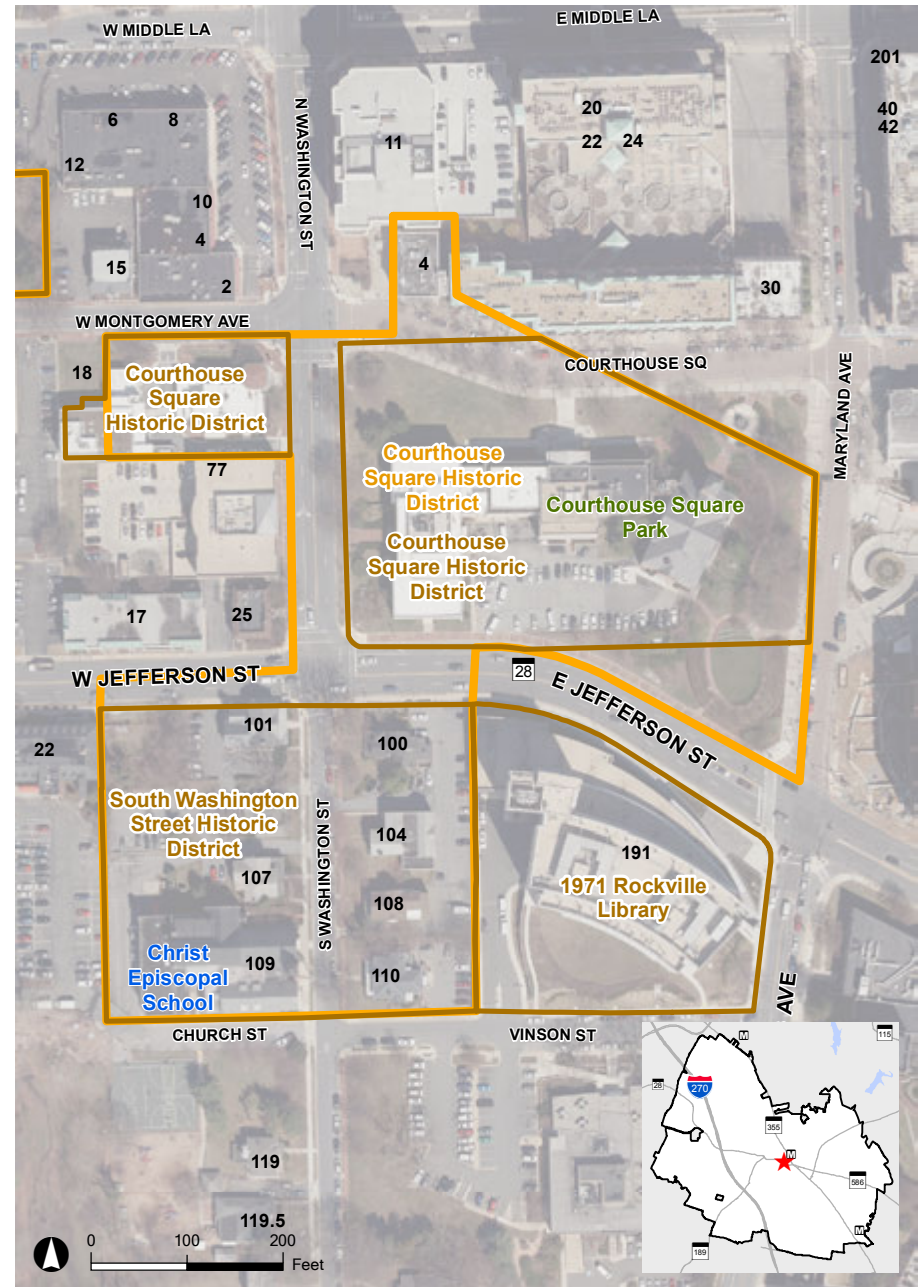


Old First National Bank






Old Post Office

Courthouse Square Historic District includes three significant public buildings in the heart of downtown Rockville: the Red Brick Courthouse (1891), the Grey Courthouse (1930), and the Old Post Office (1938). Established as the county seat with formation of Montgomery County in 1776, and then known as Montgomery Court House, the two courthouse building are in a long line of county court buildings that were located in Rockville. The Romanesque styled Red Brick Courthouse and Grey Courthouse in the English-Georgian style exemplify the architectural styles of their day. The English-Georgian Old Post Office, also in this historic district, is a third distinct architectural style. The post office was constructed under the federal Works Progress Administration (WPA) economic program, and includes a large interior landscape mural painted by Judson Smith. Listed in the National Register, but not designated within the local historic district is the Old First National Bank.



2014 Aerial

 Rockville Historic District
  Site Location
 National Register Site

