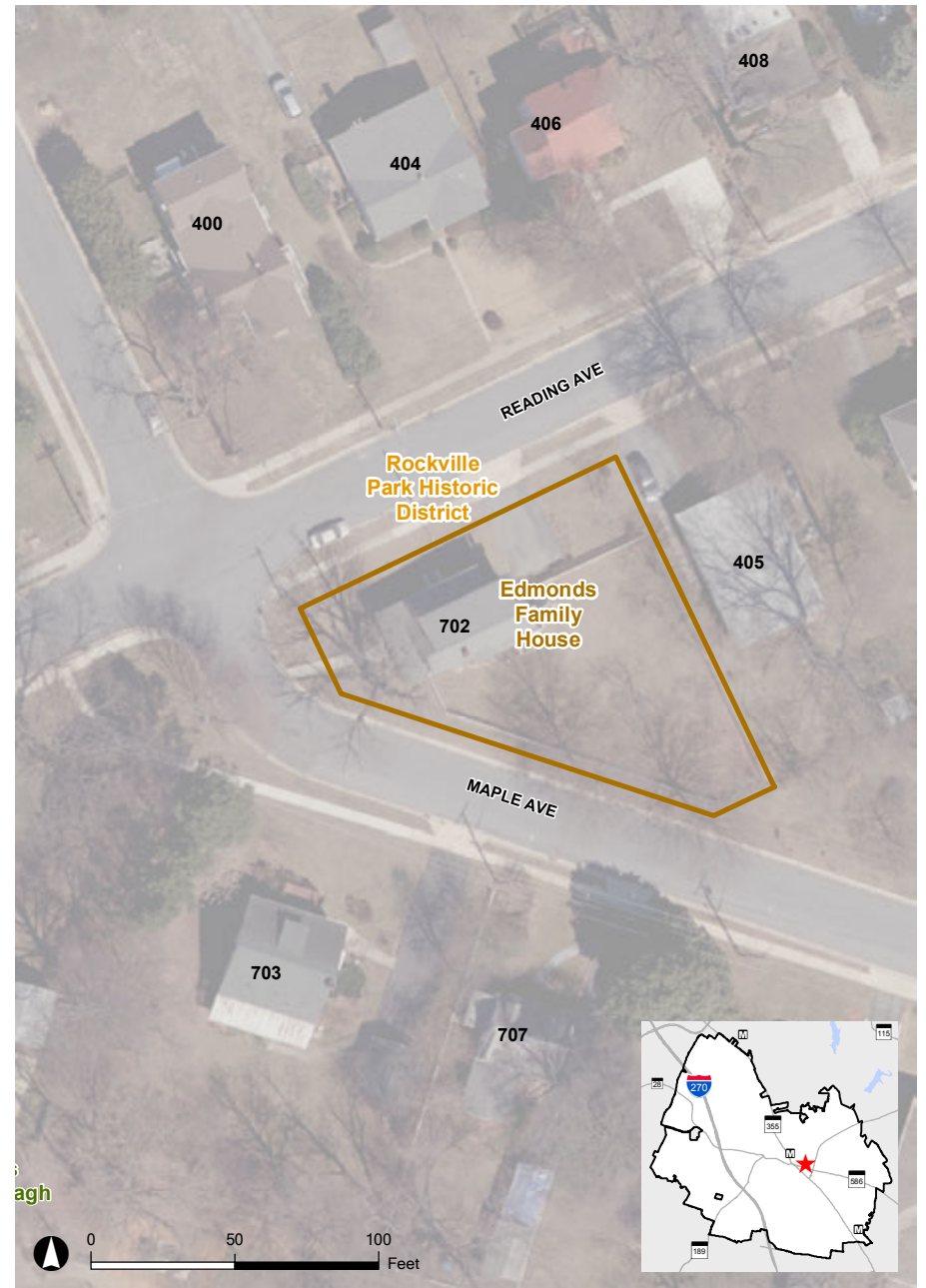


# Edmonds House

702 Maple Avenue



The Edmonds House was built in 1900 in the Rockville Park subdivision. It is an unusual example of late Victorian architecture, illustrating typical Victorian elements such as asymmetrical massing and decorative shingles on a small-scale house. Colonial Revival style features, such as the front porch columns reflect alterations between 1924 and 1949. George and Irmine Edmonds moved here in 1903. Dr. Edmonds served in local and state public offices from 1908 to 1933. The Edmonds built the house across the street at 305 Reading Avenue for their daughter, Olive Edmonds Carr.



2014 Aerial

- Rockville Historic District
- National Register Site
- Site Location

