

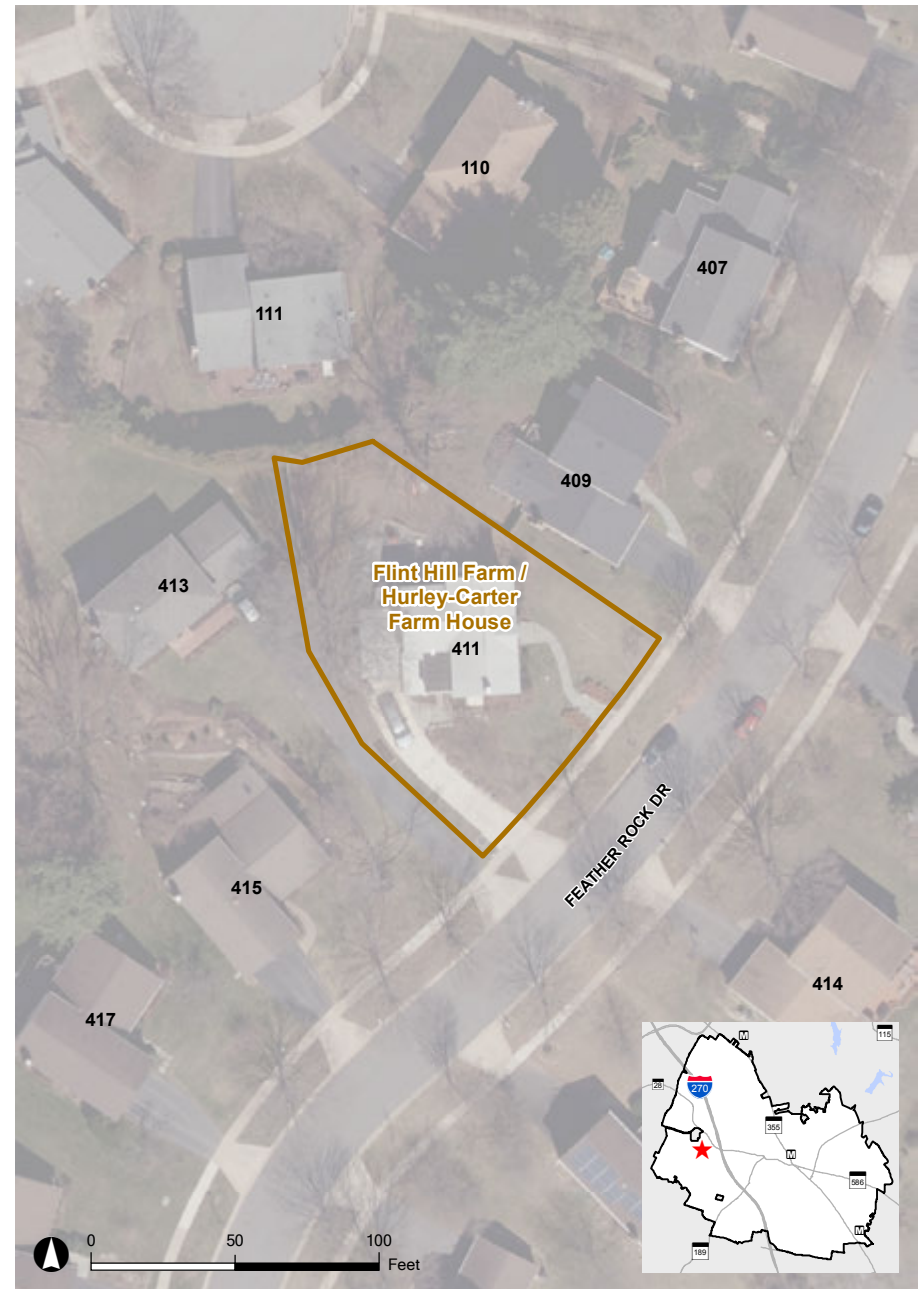
# Flint Hill (Hurley-Carter Farm)

411 Feather Rock Drive



The Hurley-Carter Farm house (M:26/3) is an Italianate style farmhouse built in 1870 to replace an earlier home at Henry Hurley's dairy farm destroyed by fire. The centerhall house has a shallow center gable with decorative brackets that are characteristic of the Italianate style.

The Hurleys called their dairy Flint Ledge Farm. The Carters were related to the Hurleys through marriage, and so, at the time of historic designation in 2000, the farm had been in the same family since 1852.



2014 Aerial

