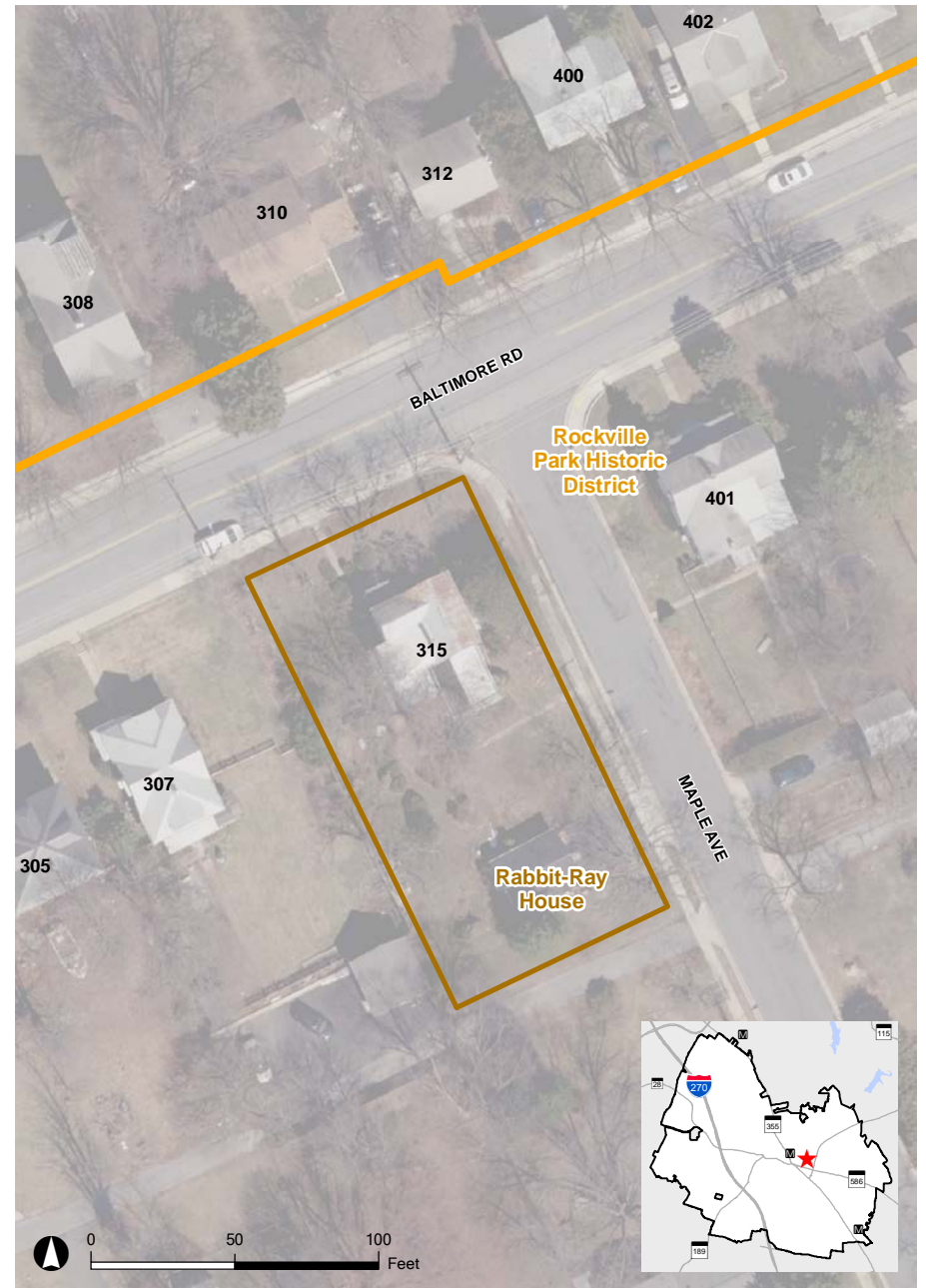


# Rabbitt-Ray House

315 Baltimore Road



The Rabbitt-Ray House at 315 Baltimore Road is a good example of a late Victorian House in the Rockville Park subdivision. It has the same plan as a Four Square style house and represents a transition from the 19th to the 20th century in terms of middle class homes. The house has original metal shingles, German siding and decorative octagonal shingles in the gable ends.



2014 Aerial