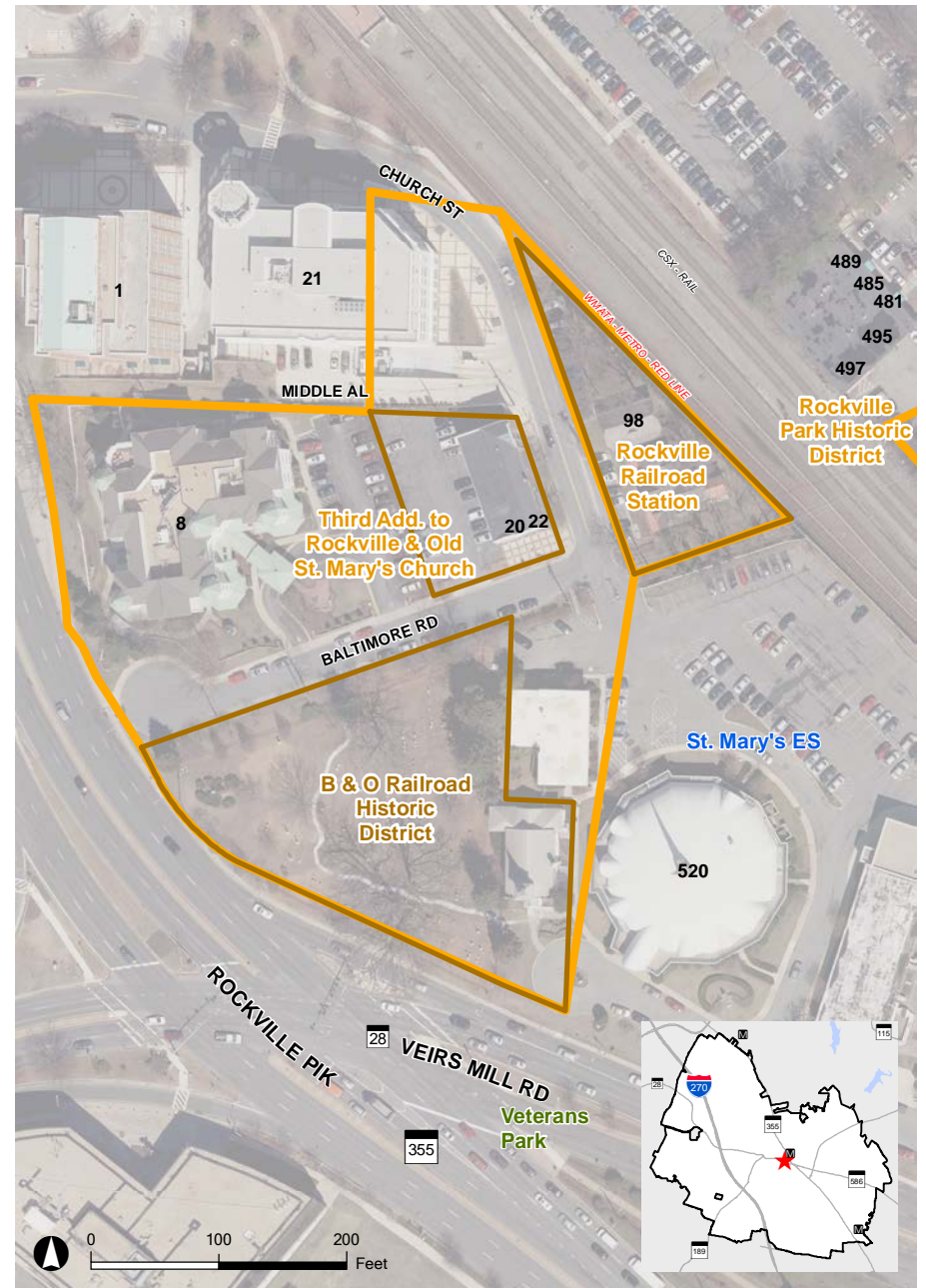


Third Addition to Rockville & Old St. Mary's Church and Cemetery

20 Baltimore Road & 520 Veirs Mill Road






The small area known as the Third Addition to Rockville and Old St. Mary's Church and Cemetery reflects and typifies the intermingling of home, business, church, and society in Victorian small-town America. This area, just outside the City limits, was farmland prior to the coming of the railroad, and since 1873 has served as the City's gateway for arrival by train. Its importance was immediately recognized by City officials, investors, seekers of desirable residential locations, and the business community. A variety of complimentary Victorian architectural styles was constructed to produce a pedestrian-scaled, tree-shaded, refined atmosphere, closely related in scale, style, spacing, and detailing to other local Victoriana--all bordering Rockville's commercial center.



2014 Aerial



National Register
of Historic Places
Listed 1978

 Rockville Historic District  Site Location
 National Register Site

